

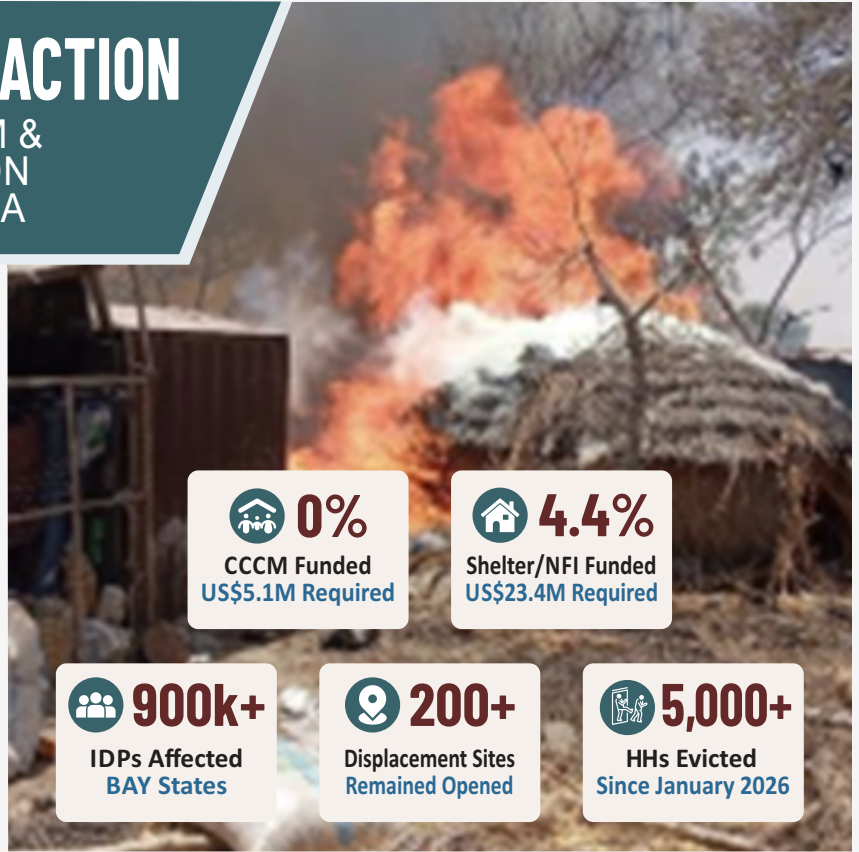


# URGENT CALL TO ACTION

## DETERIORATING CCCM & SHELTER/NFI SITUATION IN BAY STATES, NIGERIA



The CCCM & Shelter/NFI situation in North-East Nigeria is rapidly deteriorating, with over 900,000 IDPs facing worsening shelter conditions, overcrowding, and reduced site coordination capacity due to critical underfunding. The combination of growing evictions, fire occurrences, and the approaching rainy season creates an urgent risk of widespread humanitarian deterioration. Urgent and flexible assistance is needed to stabilize displacement sites, avoid subsequent displacement, and ensure the safety and dignity of affected populations.



**0%**  
CCCM Funded  
US\$5.1M Required

**4.4%**  
Shelter/NFI Funded  
US\$23.4M Required

**900k+**  
IDPs Affected  
BAY States

**200+**  
Displacement Sites  
Remained Opened

**5,000+**  
HHs Evicted  
Since January 2026



**RAINY SEASON BEGINS  
MAY 2026**



**NO STOCK  
NO PIPELINE**



**NEEDS  
RISING**



### SITUATION OVERVIEW

The humanitarian situation across Borno, Adamawa, and Yobe (BAY) states is deteriorating sharply. More than 900,000 IDPs in over 200 displacement sites continue to face:

- Worsening shelter conditions and structural degradation
- Severe overcrowding beyond site capacity limits
- Reduced presence of CCCM coordination partners
- Declining site maintenance and accountability mechanisms



While government-led return efforts continue in several locations, sustained funding shortfalls have forced humanitarian actors to scale down operations, leaving displacement sites increasingly fragile and unable to absorb new shocks. Forced and spontaneous evictions, often linked to land disputes and return pressures, are rising, particularly in Borno State, pushing vulnerable households into secondary displacement, homelessness, and unsafe informal settlements.



### COMPOUNDING RISKS: CLIMATE, FIRE & CONGESTION



**Rainy Season Preparedness - Critically Low:**  
Thousands of households remain in fragile, weather-exposed structures that cannot withstand heavy rains. The rainy season is projected to start in May 2026.



**Fire Incidents Rising Sharply:**  
More than 1,921 households have been affected by fires in Borno and Yobe states this year, an avoidable consequence of extreme congestion and flammable shelter materials.



**Severe Congestion in Reception Centres:**  
Seven reception centres across Banki, Dikwa, Bama, Gwoza, Monguno, Ngala, and Pulka host 5,404 households, far exceeding their combined capacity of 1,902.



**Ongoing Evictions:**  
Approximately 5,355 HHs have been affected by eviction and are without coordinated humanitarian support, driving families into precarious, high-risk environments.



### WHAT WE NEED

Flexible and timely funding is critical to scale up CCCM and Shelter/NFI assistance, strengthen site management, prevent further displacement, and protect the lives and dignity of conflict-affected populations in BAY States.



**ACT NOW.  
SAVE LIVES.  
RESTORE DIGNITY**



### OPERATIONAL IMPACT OF PARTNER SCALE-DOWN

- CCCM presence has sharply declined, undermining coordination, early-warning systems, and accountability mechanisms.
- Large backlogs from 2025 remain unresolved, thousands of households lack essential shelter repairs or NFI support.
- Lack of emergency shelter and NFI stocks severely limiting capacity to respond to sudden shocks such as fire outbreaks and climate shocks.
- Newly displaced and eviction-affected households are no longer consistently supported.



### CONSEQUENCES OF INACTION

- Evictions will continue displacing vulnerable households without safeguards, forcing families into informal, high-risk sites.
- Heavy rains will trigger widespread shelter collapse, escalating disease and protection risks.
- Fire outbreaks will intensify in congested sites, leading to repeated loss of shelter and assets.
- Site coordination structures will weaken further, reducing early warning and community engagement effectiveness.
- Health, WASH, and protection risks will escalate, disproportionately affecting women, children, and persons with disabilities.



### FUNDING SITUATION: CRITICAL & WORSENING

**CCCM**      Funded: **0%** | Required: **US\$ 5.1M**

**Shelter/NFI**      Funded: **4.4%** | Required: **US\$ 23.4M**



This critical funding gap is directly resulting in deteriorating site conditions, weakened coordination structures, and growing unmet needs for over 900,000 displaced people across the BAY states.



### WHAT IMMEDIATE FUNDING WILL ENABLE

- ✓ Stabilization of displacement sites through strengthened CCCM presence
- 🏠 Emergency shelter support and rehabilitation for vulnerable households
- ☁️ Rainy season preparedness and fire risk mitigation
- 🧑‍🔧 Coordinated response to evictions and new displacement
- 🤝 Protection of vulnerable populations through improved living conditions



### CALL TO ACTION: US\$ 27.5 MILLION REQUIRED IMMEDIATELY



**PRIORITIZE AND SCALE UP** | predictable, flexible funding for CCCM and Shelter/NFI across global and country-level humanitarian financing mechanisms.



**STRENGTHEN INTERSECTORAL PREPAREDNESS** | including eviction monitoring, rainy season shelter reinforcement, and fire prevention in congested sites.



**MOBILIZE RESOURCES RAPIDLY** | to reinforce structures, replenish depleted stocks, and stabilize displacement sites before the rainy season triggers large-scale shelter collapse.



Failure to act now will result in avoidable large-scale displacement, increased humanitarian costs, and loss of critical gains made in stabilizing affected populations. Supporting CCCM and Shelter/NFI interventions is complementary to ongoing return efforts, ensuring populations who remain displaced are protected while enabling safe, dignified, and informed movement decisions.

**FOR MORE INFORMATION, PLEASE CONTACT:**



**Mohammed Kyari Kaigama**  
Sector Coordinator  
✉️ mkaigama@iom.int



**Ibrahim Mark Mshelia**  
Sector Coordinator  
✉️ mshelia@unhcr.org

## PICTURES FROM FIELD ON THE SITUATION

